

# CONNECTICUT BUILDER

The Magazine of the Home Builders & Remodelers Association of Connecticut



Winter 2015  
Interactive Digital Edition



**2014 Custom Home of the Year**  
**Sound Beach Partners**

photo by Erez Sabag

[www.connecticutbuilder.com](http://www.connecticutbuilder.com)

**Custom home of the year**  
 Sound Beach Partners

The interiors are a collaboration of Sound Beach Partner, Doron Sabag and the transitional design of Amy Hirsch Interiors. A seamless indoor outdoor integration is created with floor to ceiling windows in the double height living room which features linear fireplaces on opposite walls. A clean, transitional kitchen is designed with a porcelain tile floor, Calcutta counters and an interior glass window, which frames a signature Sound Beach floating back stair with glass rails.



Sound Beach floating glass staircase (detail)



Sound Beach kitchen

The sumptuous master suite features a unique beveled plaster wall, fluted Vermont Danby marble fireplace, and master bath with marble slab walls.

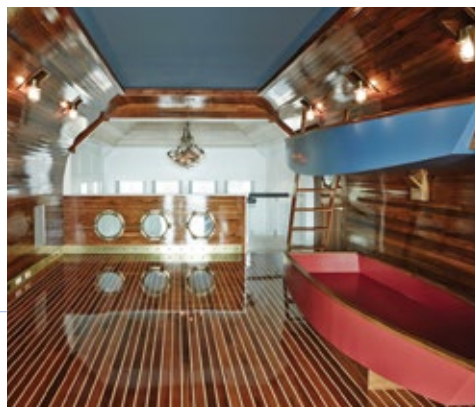


Sound Beach MBR



Sound Beach master bath

The home was built for an empty nester couple, who were focused on creating an entertainment destination for their children and grandchildren. The third floor “boat room”/children’s bunk room in marine finished teak with salvaged portholes, a boat’s prow leading to a balcony with ship’s wheel overlooking Long Island Sound.

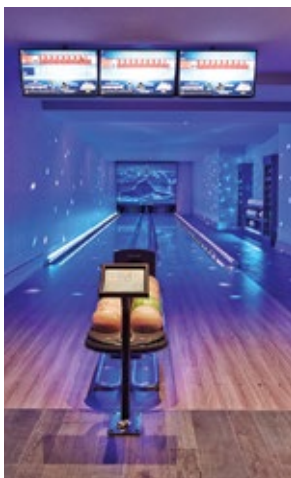


## Custom home of the year Sound Beach Partners

The home is equipped with a nursery school classroom, a rock climbing wall, and a two lane bowling alley. For the adults, there's an air conditioned wine room with radiant heated floor and temperature controlled red/white wine storage. Even the mechanical room is stunning.



Sound Beach rock climbing wall



Sound Beach bowling alley



Sound Beach Accessory Building interior



Sound Beach Accessory Building

At water's edge, a 500sf teak and steel retreat protruding from a natural rock formation won Sound Beach Partners another HOBI Award for BEST ACCESSORY BUILDING. This dockside gathering place features a planted roof and deck overlooking the water. Inside, there's an enchanting living room, kitchenette and shower.

Doron Sabag and  
Jim Hoffman completed the  
home, along with a rebuilt  
sea wall and a new dock  
in 14 months!

## ★ Best Green Energy-Efficient Custom Home

# Murphy Brothers Contracting

This Zero Energy Ready custom home in Old Greenwich has received every kind of publicity except a segment on 60 Minutes! Built by and for Chris Murphy, and designed by architect, Rex Gedney, the home features Fox Blocks ICF exterior walls and DOW POWERHOUSE solar roof shingles – which won BEST GREEN PRODUCT.

The DOW POWERHOUSE™ Solar Shingle system installs and protects like regular shingles while generating clean, renewable energy to power a home. POWERHOUSE Solar Shingles offer sustainability, energy savings and seamless design all in one. They offer a building-integrated photovoltaic solution for asphalt-composition shingle roofs that installs flush with asphalt shingles, cedar shake, concrete and clay tile, and both polymer and traditional slate. Ease of installation – there's no on-roof wiring required because they secure directly to the roof deck, just like traditional shingles. Manufactured in Michigan and backed by The Dow Chemical Company, these durable shingles withstand sun exposure, extreme temperatures, wind, hail and other inclement weather, and offer a 20 year warranty from Dow.

Other green features in Murphy Brothers winning green custom home include LED lighting, blue jean insulation, a dual fuel heat pump and an ERV system resulted in an outstanding HERS 27 energy rating. Noteworthy interior features include a reclaimed chestnut kitchen island top and a sliding barn door made from an old oak, toppled by Hurricane Sandy.