



Architecture: Tanner White, Tanner White Architects Interior Design: Vanessa Rome, Vanessa Rome Interiors
Home Builder: Doron Sabag, SBP Homes



Worlds Collide

Modern farmhouse ease meets collectible contemporary design in a family's playful yet refined Greenwich residence.

WRITTEN BY DAN HOWARTH | PHOTOGRAPHY BY KIRSTEN FRANCIS | STYLING BY RYAN REINECK

W

hite-picket fences around traditional Colonial-style manses may spring first to mind at the mention of Greenwich, Connecticut. But when a young family with two boys relocated

to the region to enjoy the extra space and remote work opportunities of the post-COVID world, they had a much more contemporary, art-filled vision for their life beyond Manhattan.

A collaboration between architect Tanner White and general contractor Doron Sabag, their new-construction home offered an open layout, high ceilings, vast picture windows and impeccable detailing. “It was a beautiful canvas to play off,” says designer Vanessa Rome, whom the homeowners connected with via Instagram. She quickly found common ground between their collective tastes and a synergy with the home. “I love how the outside feels very much like a modern farmhouse,” Rome shares, “And then the interiors are very clean and contemporary.”

The architecture proved pivotal to Rome and her clients’ sumptuous, tactile and slightly edgy approach to the design. Take the existing horizontal wood slats that cover an entry wall and turn a corner into the living room, adding to this formal entertaining space a 1970s vibe that the furniture selection further emphasizes. The very first piece chosen for this area was Edra’s modular On the Rocks sofa, which Rome had her eye on for some time and “is very design forward, but very livable, and makes a statement,” according to the wife. This piece helped set the tone for the room and the interiors overall.

Building up textured layers in this living area, a green wool-and-mohair rug provides a strong visual connection to the grassy landscape beyond, while shapely armchairs with patterned upholstery are sprinkled in to play up the groovy ’70s feel. “Modern homes need to be furnished with texture and color to avoid feeling cold,” Rome posits.

One of her favorite designers, Casey Johnson, created the blackened-wood entry console, placed below an oversized circular mirror that’s

cleverly suspended from the ceiling to avoid drilling into the wood paneling. “There are many pieces in this home that I’ve coveted and have been wanting to use, and my client was completely in line with them,” Rome divulges. “It was a very fun project for that reason.”

For the grand floating staircase, which encircles an atrium that’s highly visible from the driveway, designer and clients were in perfect alignment on what was needed: a metal-and-blown-glass chandelier that extends the full height of the three-story void. “It couldn’t just hover and stop at the landing, especially because you see it from the outside,” Rome notes. Adds the wife, “It feels like the house was built around that piece.” Throughout the residence, a variety of sculptural lighting fixtures elevate each space in unique ways, like the sculptural fabric pendant in the living room, the minimalist geometric chandeliers above the dining room table and the delicate brass fixture in the powder bath.

While the color palette is grounded in neutrals and jewel tones, brighter hues are introduced through the couple’s art collection. Aside from the commanding black-and-white Richard Serra painting in the dining area, works including a striped Ian Davenport quartet on the upstairs landing and a Julian Opie series in the stairwell contrast with the white walls, oak flooring and black-trimmed windows. “The art is as modern as the house is, and we tried to mix different media,” notes the wife, who worked with advisory firm Chestman Art to source several of the pieces.

Despite such a sophisticated collection of art and design, it was imperative that the home not feel like a museum—particularly with boys aged 9 and 12. For them, secret closets are accessible from their bedrooms, the dining table becomes a puzzle and Lego-building station and the living room couch serves as everything from soccer goal posts to a trampoline. “My younger son is its biggest fan because he can adjust the backrests, hide behind them and use his iPad on it. He even jumps on that couch,” the client reveals. To this end, Rome was able to deliver a distinct brand of livable luxury—one that belies expectations from the driveway, not to mention the off-ramp from I-95. ■



This modern farmhouse-style dwelling boasts double-story windows that flood the residence with natural light. The crisp white exterior cladding and black-framed windows offer a chic contrast to the unexpectedly bold and colorful interior design within.

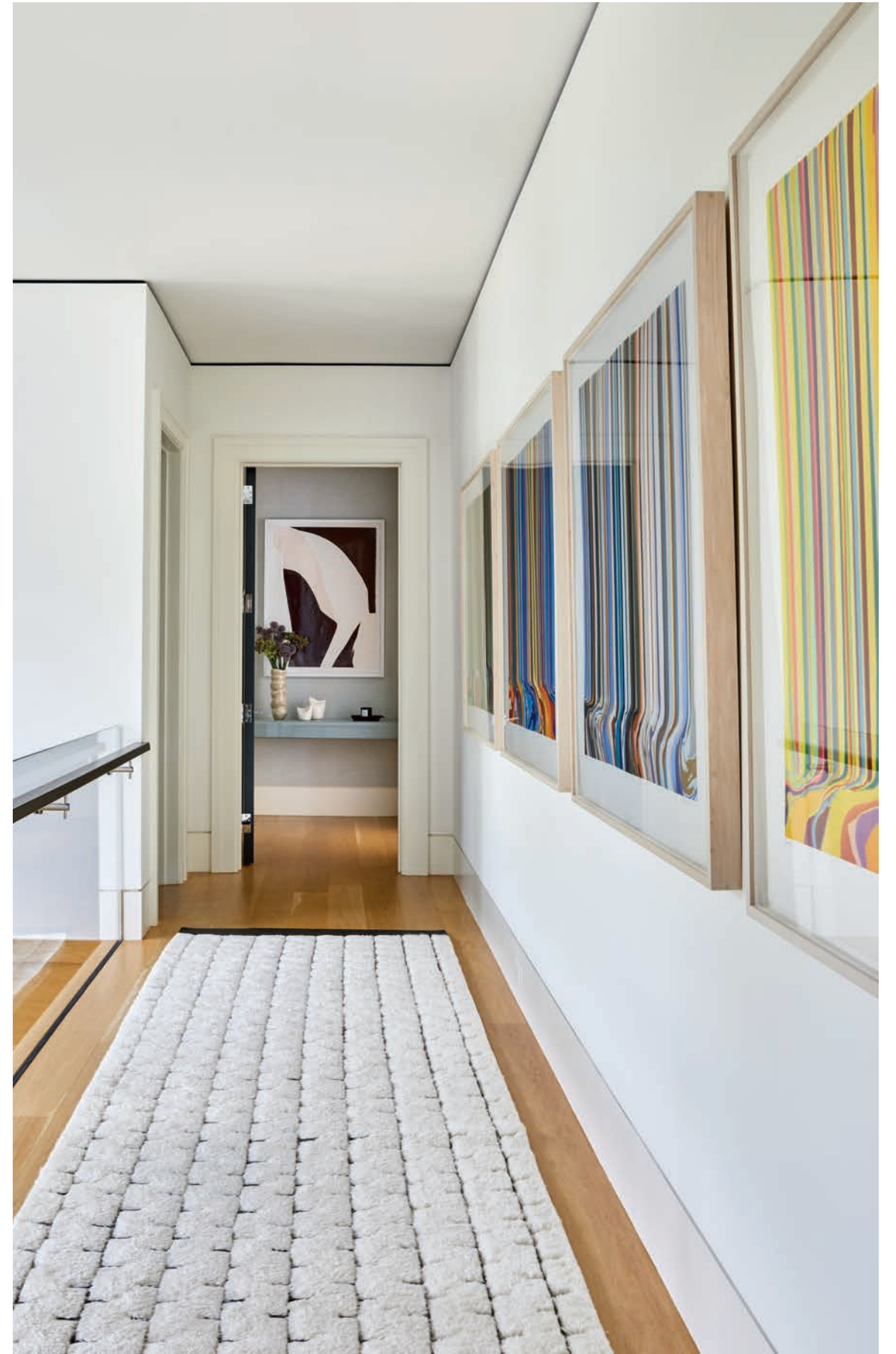
The living room embraces a 1970s
vibe with its high-pile rug from
Fayette Studio. Edra's On the Rocks
sectional, armchairs from Craft
Associates and a Thayer Coggin
accent chair gather around Pierre
Augustin Rose coffee tables.
The pendant light is Coco Flip.





Right: Designer Vanessa Rome envisioned a gallery-like tableau for the upstairs landing, where striped works by Ian Davenport provide an energizing color jolt. A Moroccan runner from Fayette Studio leads the eye to a black-and-white work by Natasha Law.

Opposite: In the dining room, a Richard Serra painting hangs above a Wüd console. Verner Panton chairs from Property Furniture rim a table composed of Mark Jupiter drum bases topped with Artistic Tile marble. The chandeliers are Lambert & Fils.





Left: Expressive lighting in the form of Apparatus' Triad 3 pendant is continued in the powder room. To complement the marble vanity, Rome commissioned decorative painter Lessandra Martins to coat the walls in a custom glittering mica-inflected gray paint.

Opposite: The office's comfortable work-from-home setup comes courtesy of a DeMuro Das desk and Färg & Blanche desk chair. Bespoke lounge chairs in mustard yellow pick up the tones in the Rug Art floor covering. Above is an Arteriors chandelier.





Right: Wallpaper patterned with teal dragonflies from FliePaper offers a lighthearted moment in the basement powder room. A spherical Dutton Brown pendant light provides the perfect glossy color match.

Opposite: A grass-cloth wallcovering by Phillip Jeffries wraps the guest room, joined by a Parachute bed. The Botolo accent chair and Leanne Ford for Crate & Barrel nightstand continue the home's emphasis on soft shapes. The rug is Fayette Studio.

